

V3.3.0 Update Contents	IP-A1RM	IP-A1PG	IP-A15C15 IP-A1PC238	IP-A1AF IP-A1PA12
IP-A1PG SIP voice multicast transmission Function improved				
[SIP] Add a function to forward to a fixed value multicast channel without selection by DTMF. Add Broadcasting Destination Selection Setting to the forwarding setting screen.	—	✓ New	—	—
Transmitting device supports IGMP Query				
[Multicast] If there is no IGMP querier within the network, the transmitter device will automatically function as an IGMP querier.	✓ New	✓ New	—	—
Increases in local Broadcasting performance				
[Local broadcast] Added setting of "No Delay" mode	—	—	—	✓ New
Improved compatibility with other companies' devices for remote API digest authentication				
[Remote API] Supports RFC7616 for HTTP Digest authentication	✓ New	✓ New	✓ New	✓ New
Added "Play Sound" buttons to the IP setting tool				
[IP Configuration Tool] A test Broadcasting can be facilitated by the "Play Sound" buttons.	—	—	✓ New	✓ New
Usability improvements				
[Setting] Changes made on the Local Broadcast settings screen are applied without rebooting.	—	—	—	✓ New
[Setting] Changes made on the Chime settings screen are applied without rebooting.	✓ New	—	—	—

An option to select the "Transfer Destination" was added to the Convert settings screen

IP-A1PG

We have newly added an option to select "Transfer Destination" on the transfer setting screen for the Paging Gateway IP-A1PG

When transferring voice from SIP phone, you can now choose from:

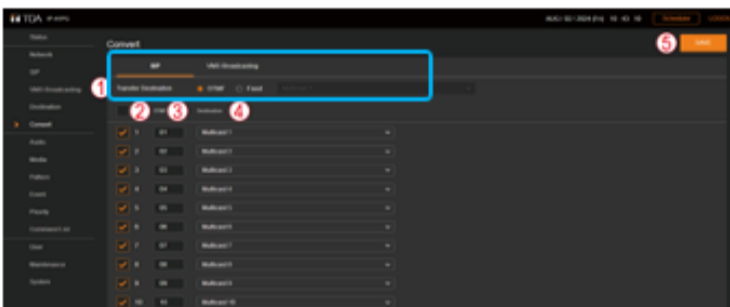
DTMF: Choose a transferring destination with a DTMF number

Fixed: Immediately forward to a predetermined transfer destination

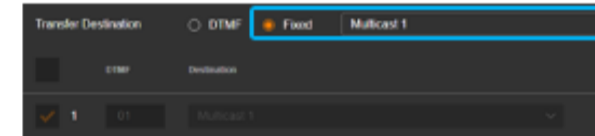
You will be able to select from these two options.

IP-A1PG Convert setting screen

When setting up transfers with DTMF



When transferring instantly to a pre-set destination



The benefit of choosing "Fixed" is,

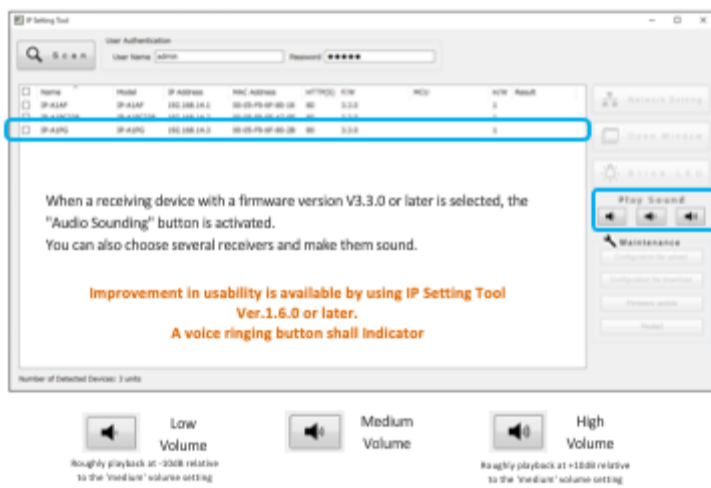
1. Can be used with SIP phones/SIP servers that do not support DTMF (RFC2833 or SIP INFO)
2. The user does not need to perform DTMF input operations after the call is established.

Support for playback of test sound using IP setting tool

From IP Setting Tool Ver.1.6.0, an "Play Sound" Buttons (Low / Medium / High) has been added.

Receivers updated to V3.3.0 can playback the test audio using the "Audio Sounding Button" on IP Setting Tool Ver.1.6.0.

Supports receiving devices only



Use case

1. This function is used to check which actual device the Device Information detected by the IP Setting Tool indicates.
2. These test sound are used as a reference for matching the volume when different types of speakers are used.



Some settings have been modified to apply changes without rebooting the system.

The settings screen has been improved to improve usability and reduce setup time.

The "Local Broadcasting Screen" on the IP-A1AF and IP-A1PA12, and the "Chime" Screen on the IP-A1RM have been modified so that setting changes can be applied without rebooting.

